

# XMOZU

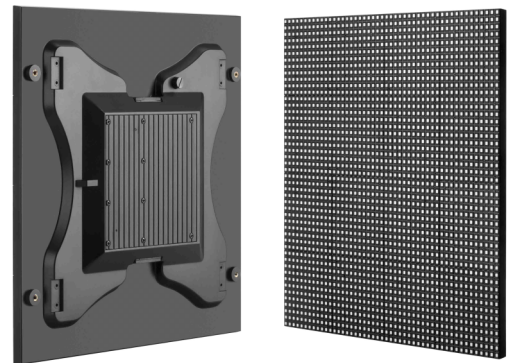
## X10-O

10mm pixel pitch, Indoor Smart LED Display

### About XMOZU X10-O

XMOZU is an intelligent, modular splicing LED display. There are power and lamp board in one module (3 in 1--lamp, drive and system). MOZU is light and thin with single signal line which is easy for splicing.

XMOZU X10-O is a DIY-level civilian intelligent products. On mobile phones, tablets and other mobile devices, through the APP screen parameters can be set and program broadcast can be managed.



Ultralight



Ultrathin



7680  
Hz  
Refresh rate



3000:1  
Contrast



Low  
Flexible



CE  
Certificate



IP67



## Product Advantages

### Front-maintenance with spring structure

XMOZU is designed with simplified installation structure, matched with only one cable. XMOZU is mounted to the fixed bracket, which only needs the push from your hands, then installation and maintenance can be completed.

### DIY splicing freely

It meets the demand for DIY modules of end clients, and can splice various models easily like the children play toy bricks ,making LED display really step into commercial or civil market.

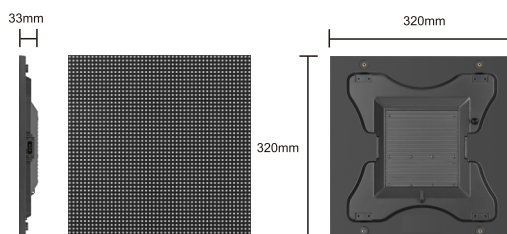
### Light and thin. Lamp board, system and drive are integrated into one module(3 in 1)

XMOZU integrates power, lamp board, drive and system into one module, which makes the size of the module to be only 320\*320mm. And the weight is only 1.65Kg.

### Smart, mobile phone controls

XMOZU is already a terminal product. Users don't have to bother to study technology of it. With APP from YDEA, the display can be easily controlled and played by mobile phone or tablet.

## Technology parameter



	X10-O
Pixel pitch (mm)	10
Pixel density (dot)	1024
Module size (mm)	320 × 320 × 33
Module pixel (dot)	32 × 32
Pixel configuration	1R1G1B
LED encapsulation	SMD2727
Brightness (CD/m <sup>2</sup> )	≥7000
Luminous efficiency	≥95%
Angle of view	120°
Contrast ratio	3000:1
Gray level	16bits
Scanning mode	1/2
Refresh frequency	7680
Repetition frequency	60
Maintenance mode	Front maintenance
Control mode	Synchronous and asynchronous control
Splicing module specification	1*1、1*2、1*3
IP grade	IP67
Working voltage	100/240VAC
Max consumption	60
Working environment	-30-55°C
Weight (kg/Pcs)	1.55

### SHENZHEN XMOZU DISPLAY CO.,LTD

Address: 9th Floor, Building A, Block 5#, Skyworth Inno Valley, No.8 Tangtou 1st Road, Shiyan,Baoan District, Shenzhen, P.R.China

Call: +86 755 8658 6287 Fax:+86 755 8658 6224

Website: www.xmozu.com