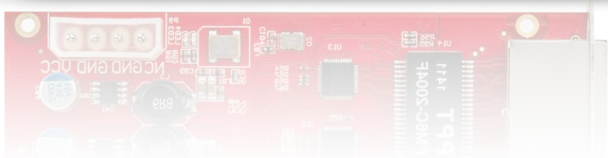
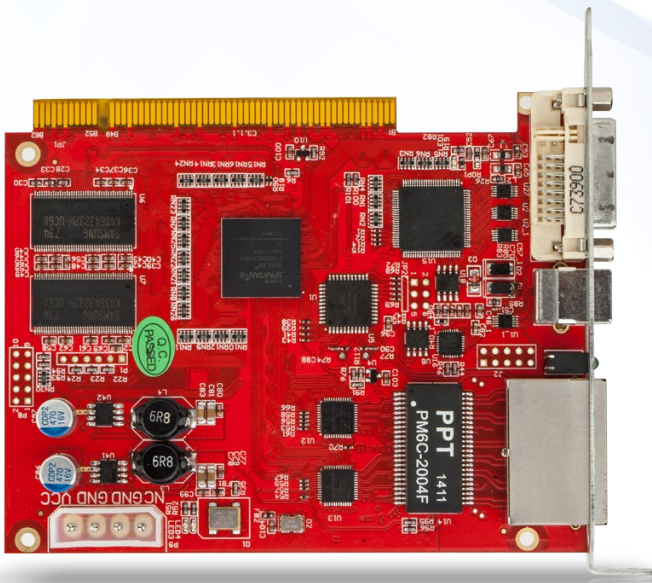




云智科技  
YDEACHN.COM

Service Hotline: 400-666-9216



# Controller Specification

## C-3.1

Version: V02 Date: 2017-07-31

## Product Summary

Main controller C series is a full range of vide solution designed for the needs of high-end display applications , with features of large loading area, supporting real-time transmission, dot-by-dot correction function, field upgrade, high grayscale & high refresh, various scanning modes, LED fault information transmitted and diagnosis and dot-by-dot monitoring function etc.

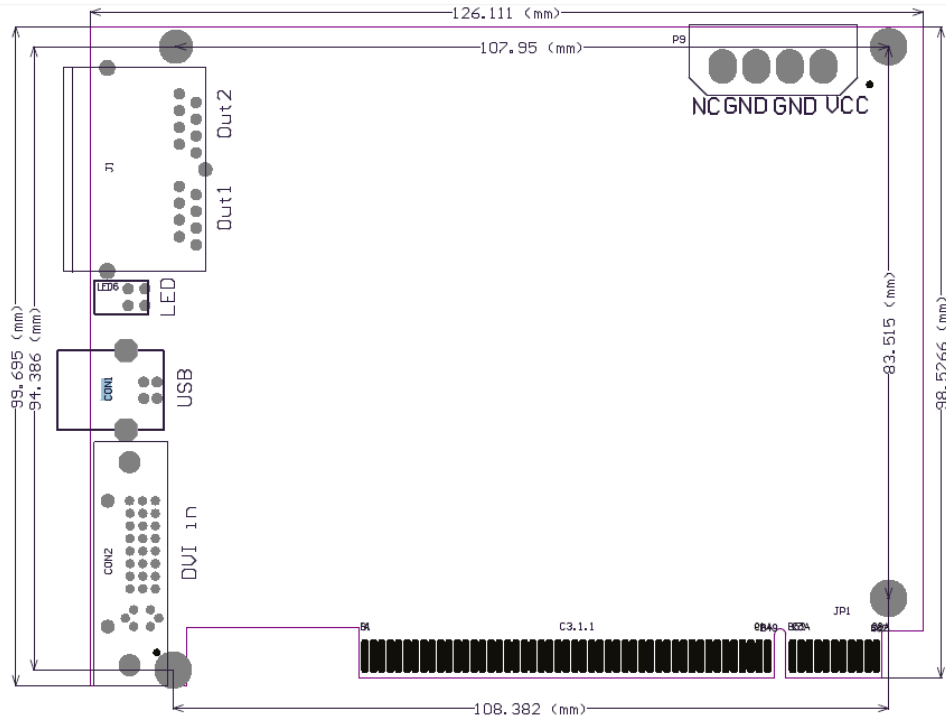
## Product Feature

- Input resolutions up to 1920 \* 1200.
- Output resolution up to 1280 \* 1024.
- DVI video input, two Ethernet ports output.
- Control Support USB interface and control panel.
- Replace the screen without having to re-set the body.

## Technical Specifications

Control area	1280 * 1024	Distributor	-
Input resolution	640x480-1920 × 1200	Load Split	Horizontal
Output resolution	1280 * 1024	Shaped Display	Support
Multi-machine in parallel	Support	Transmission distance	100m
Video Input	DVI	Control Interface	USB
Intelligent Recognition	Support	Temperature	-10℃-60℃
Pixel by pixel correction	Luminance、Color	Power	DC 5V
Online upgrade	Support	Size (L × W)	126 * 99.7 (mm)

Board Dimensions



Board Chassis Interface Definition

